

## Year 6 Newsletter – Summer 2

### Welcome

Welcome back to your final ever term in at Hazel Leys. We have a very exciting term ahead of us.

### Spelling and Reading

This term we will continue to test spelling on a Friday and new spellings will be sent home on this day. In reading we are continuing to work on our inference and explanation skills as well as retrieval. As a reminder, children are expected to log on to Spelling Shed to practise their weekly spellings and books, which match children's reading levels, are on Ebooks. Dojo points are given for children using both these platforms weekly.



### Writing

In English this term we will be writing persuasive arguments, narratives and non-chronological reports linked to our science topic.



### Maths

In maths we will be looking at applying what we have learnt through our primary school journey into a range of real-life scenarios.



### Science

Our science topic this term is evolution. In this unit, children will be introduced to concepts of evolution: the process by which living organisms (plants and mammals) develop and change, over time



### Computing

In computing we will be looking at information technology and blogging.



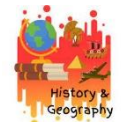
### Art & Design

This term's unit is on photography.



### Geography/History

In geography, pupils will be introduced to the African continent and will begin by looking at the diversity of the continent, preventing any misconceptions occurring about Africa being a homogenous place. They will build on this knowledge, looking further back in time and recognising that scientists believe Africa to be the oldest inhabited continent. Pupils will locate physical geographical features of the continent such as the coastlines, the equator, the Atlas Mountains, Mount Kilimanjaro and the Sahel region. They will know that Africa is rich in minerals and resources..



In history, The children will learn about and compare the campaigns of the National Union of Women's Suffrage Societies-led by Millicent Fawcett-and the Women's Social and Political Union led by Emmeline Pankhurst.

**PE**

In PE this term we will be swimming and learning to play dodgeball.



**PSHE**

Our PHSE topic this term is Changing Me.



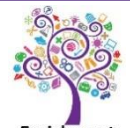
**RE**

In RE this term we will be looking at Islam and answering the question: Does belief in Akhirah (life after death) help Muslims lead a good life?



**Enrichment**

This term we will be going our residential.



Enrichment

**Homework Project**

Please see separate letter. To create a project based on either Africa or the suffragettes.



**Skills Builder**

The Skills Builder Universal Framework provides a common language for building essential skills with children and young people.

Research shows that building essential skills supports social and emotional wellbeing, learning and academic outcomes and careers and opportunities



**Times Tables Rockstars**



**Spelling Shed**



### Rewards

The children will receive 'Dojo Points' as reward for good behaviour, work and attitude. Points can be 'spent' on prizes periodically.



### Class information

**Class Teacher:** Mr Egan

**Teaching Assistants:** Mrs Eden and Miss Milan

Please remember to name your child's school jumper or cardigan.

We request that all children bring a named water bottle to school every day and as the weather is warmer a sun hat and sun cream.

Please remember if you are making your child a packed lunch, we ask you not to put anything in that contains nuts.



### **Dates for the diary!**

Monday 5<sup>th</sup> June – term 6 starts

Thursday 15<sup>th</sup> June – Mintridge visit – Laura Sugar MBE

Wednesday 28<sup>th</sup>- Friday 30<sup>th</sup> Jun - Residential

Tuesday 4<sup>th</sup> July – NSPCC Speak Out Workshop

Wednesday 5<sup>th</sup> July – KS2 Sports Day

Friday 7<sup>th</sup> July – Transfer Day (please note that some secondary schools transfer dates are different)

Friday 14<sup>th</sup> July – School Sleepover

Monday 17<sup>th</sup> July – Bikeability week

Friday 21<sup>st</sup> July – term 6 ends.